

NICK OF TIME

INTRO: |drums...|.....|Dm7 C/E Fmaj7 | G Am7 | Dm7 | Dm7/G | x2 |c |c |

1 2 3 4 12 34

|Dm7 |c/E |F |c/G |

A friend of mine she cries at night, and she calls me on the phone

|Dm7 |c/E |F |c/G |

Sees babies everywhere she goes and she wants one of her own

|Dm7 |c/E |F |c/G |

She's waited long enough she says and still he can't decide

|Dm7 |c/E |E+/Ab G/Ab |Am |Dm7 |c/E |F F/G |c |c |

Pretty soon she'll have to choose and it tears her up inside She's scared.. scared she'll run out of time ^

|Dm7 |c/E |F |c/G |

I see my folks, they're getting old, and I watch their bodies change

|Dm7 |c/E |F |c/G |

I know they see the same in me, and it makes us both feel strange

|Dm7 |c/E |F |c/G |

No matter how you tell yourself, it's what we all go through

|Dm7 |c/E |E+/Ab G/Ab |Am Dm7 |Dm7 |

Those lines are pretty hard to take when they're starin' back at you

|Dm7 C/E F F/G |c |c |

Scared you'll run out of time

|Bb |F |c |Dm7 |

When did the choices get so hard? With so much more at stake

|Dm7 |c/E |E+/Ab G/Ab |Am |Dm7 |Dm7 C/E F F/G |Dm7 |

Life gets mighty precious when there's less of it to waste Hmmmmm...

|Dm7 C/E F F/G |Dm7 |Dm7 C/E F F/G |c |c |

Scared to run out of time

|Dm7 |c/E |F |c/G |

Just when I thought I'd had enough and all my tears were shed

|Dm7 |c/E |F |c/G |

No promise left unbroken, there were no painful words unsaid

|Dm7 |c/E |F |c/G |Dm7 |c/E |

You came along and showed me how to leave it all behind You opened up my heart again and then

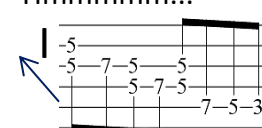
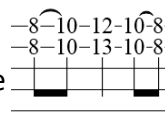
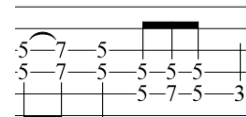
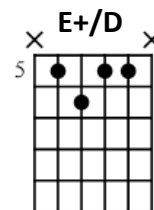
|E+/D |Am |Dm7 |G |Dm |G |Dm7 |

much to my surprise I found love, love in the nick of time (Love in the nick of time) I found love

|G |Dm7 |G |Dm7 |G |c |c |

(Love in the nick of time) (Love in the nick of time I found love, baby Love in the nick of time

OUTRO: |Dm7 C/E Fmaj7 | G Am7 | Dm7 | Dm7/G | x4 |c |c |



Intro
Moderately ♩ = 120

***Dm7 Riff A** C/E Fmaj7 G Am7 Dm7 **End Riff A**

(Drums) 2 **Gr. 2 (clean)**

mf
w/ chorus

****Gr. 1** **Rhy. Fig. 1** **End Rhy. Fig. 1**

2 *mf*
w/ fingers

(string-----)

*Chord symbols reflect implied harmony.
**E/bds. are for ga.

Riff B Dm7/G Dm7 C/E Fmaj7 G Am7 Dm7 **End Riff B** **Riff C** **End Riff C**

(string-----)

Rhy. Fig. 1 **End Rhy. Fig. 1** **Rhy. Fig. 2** **End Rhy. Fig. 2**

(string-----) (string-----) (string-----)